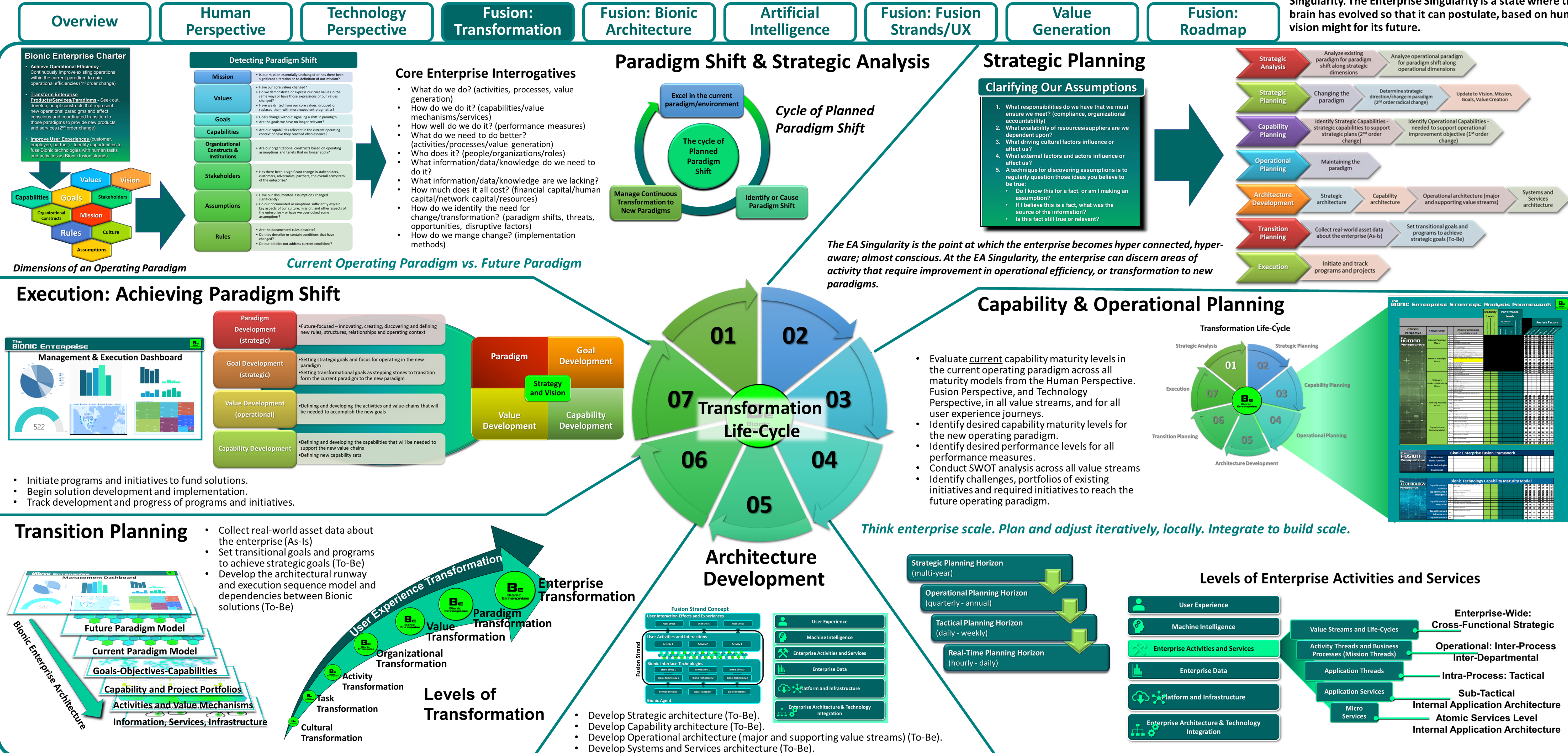




The enterprise must become able to know its current state. That is the EA Singularity. The Enterprise Singularity is a state where the Bionic Enterprise brain has evolved so that it can postulate, based on human goals, a logical vision might for its future.



- Bionic UX Effects
- Mentoring
- Collaboration
- Empathizing
- Partial Task Automation
- Task Acceleration
- Immersion (UX/VR/AR)
- Task Augmentation
- Task Elasticity & Scalability
- Task Autonomy
- Task Precision
- Task Accuracy
- Decision Support

- Transformation Elements
- Paradigms
- Goals
- Capabilities
- Interfaces
- User Experiences
- Value Outcomes
- Operational Efficiencies
- Strategic Advantage
- Experience Roadmap
- Fusion Strands
- Technology Stack
- Bionic Effects
- Bionic Functions
- Bionic Technologies

**Bionic Enterprise Strategic Plan: How do we evolve the enterprise and the user experiences associated with it to achieve operational efficiency in the current operating paradigm, while transforming for the coming paradigm shift?**

Copyright 2023 Kevin L. Brett

Self-evolving ontologies generated by machine learning algorithms must capture and structure the configuration of the enterprise and everything connected to it, generating an As-Is enterprise architecture in real-time. This is the EA Singularity.

## Bionic Digital Platform

- Interface
- Intelligence
- Integration
- Infrastructure
- Transformation

Bionic Enterprise Capability Areas